



SSE VISION AND MISSION

VISION

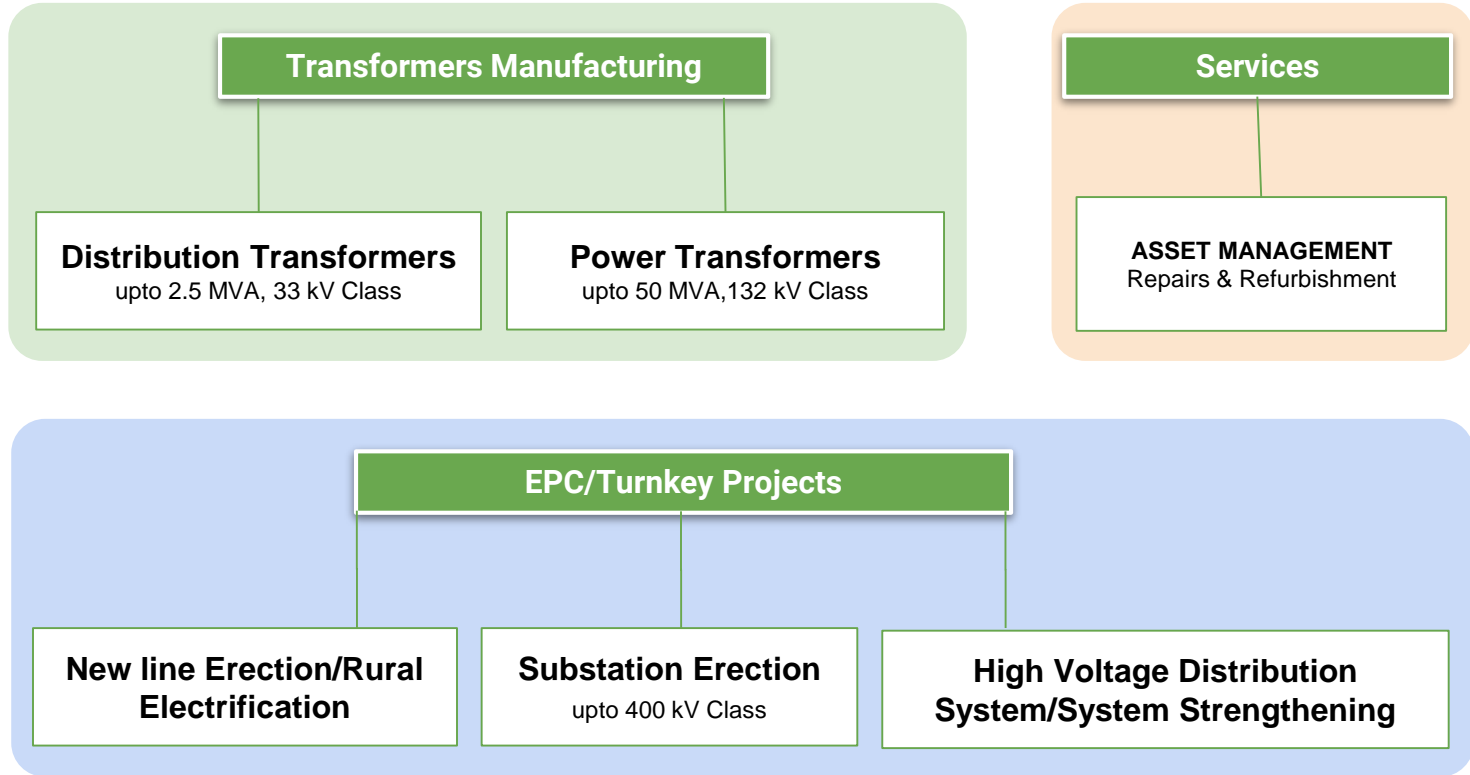
To build a sustainable organization that cater to the emerging needs of Energy sector

MISSION

We are focussed on product and process innovation to meet customers expectation on sustainable basis

- Leveraging our competence, experience and expertise for safer, reliable and cost effective solutions
- Investing in People, Technology and Processes
- Lead by action on social responsibility

BUSINESS VERTICALS



ABOUT US

- Established in **1994** at Kadapa, Andhra Pradesh, India
- An **ISO 9001: 2015 & ISO 14001:2015** certified company
- Annual Revenue of **180 Mn* USD**
- **1000+** workforce** in Manufacturing & **1500+** workforce** in EPC division
- Completely **Backward** integrated facility with automation, covered area of **90,000 Sq. Mtrs**
- Manufacturing capacity of **300** Distribution Transformers / day (REC Range)
- Installed base of **3,50,000+** Transformers
- **3** patents applied
- Largest manufacturing facility in INDIA for **Energy Efficient Amorphous** Transformers
- Largest EPC Player in **HVDS (Power Distribution System Strengthening)** Projects
- Erected **80,000 Kms** of LT & HT Lines upto 132 kV

**In 2018-19, Transformer Manufacturing:EPC Projects - 40:60*

*** Full time + Contract*

QUALITY IS NOT AN ACT, IT'S A HABIT

The demand for energy is set to continue increasing, supporting the world's economic investment into the future. With wide-ranging experience and expertise, SSE provides highly effective solutions that cater to a conscientious ecosystem.

Our pursuit of excellence while delivering the best quality output has empowered us to become leading players in the electrical industry in India.

Our Strategic and Systematic Enhancement approach in business, and the vision to become a global player, helps us continually improve, expand and consolidate.

We want to be recognized as a world-class leader in everything we do, and we want all our stakeholders to be proud of their association with us.

Our principles and passion for quality make that happen. Through personal excellence and product excellence – which inevitably leads to business excellence – and stakeholder happiness, we strive to exceed client expectations and scale new heights of success.



OUR CERTIFICATIONS

ISO 9001

Certificate of Registration
 GMCSP hereby certify that the organization
SHIRDI SAI ELECTRICALS LTD
 Plot Nos:13/82, 53,54,55,58, 59 & 60,
 Industrial Development Area,
 Kadapa-516 002,
 Andhra Pradesh, India.

Has established and applies a Quality Management System in accordance with
ISO 9001:2015
 For the scope of activities :

- Design and Development, Manufacturing, Supply and Servicing of Distribution and Power Transformers
- Processing and Testing of Aluminium and Copper Conductors

Q-171214
 Certificate Number
 06 December 2012
 Date of Initial Registration

23 December 2018
 Date of Last Issue
 22 December 2019
 Date of Expiry

Global MCS MSCB-122 IAF REGISTRATION ATTACHEE

Certificate is valid for 2 years (23.12.2018 to 22.12.2020) From the Date of Last Issue. Upon Successful Completion of Surveillance Audit New Certificate With an Extended Validity will be issued.

Global Management Certification Services Pvt.Ltd.
 #402, Plot No.410, Mutturu Nagar, Mylavolu, Serilingampally, Hyderabad - 500 049, India.
 www.gmcglobal.in, E-mail:info@gmcglobal.in
 This certificate is the property of GMCSP, and shall be returned upon request to GMCSP.
 The Registration does not ensure the quality of products under the firm's production.

ISO 14001

Certificate of Registration
 GMCSP hereby certify that the organization
SHIRDI SAI ELECTRICALS LTD
 Plot Nos:13/82, 53,54,55,58, 59 & 60,
 Industrial Development Area,
 Kadapa-516 002,
 Andhra Pradesh, India.

Has established and applies an Environmental Management System in accordance with
ISO 14001:2015
 For the scope of activities :

- Design and Development, Manufacturing, Testing, Supply and Servicing of Distribution, Power Transformers, Dry Type and Special Transformers.
- Processing, Testing and Supply of Cores, Core Assemblies, Winding Coils and Core Coil Assemblies (CRGO Silicon Steel & Amorphous Metals) of Distribution, Power Transformers, Dry Type and Special Transformers.
- Processing, Testing and Supply of Aluminium and Copper Conductors.

E-191101
 Certificate Number
 12 November 2019
 Date of Initial Registration

12 November 2019
 Date of Last Issue
 11 November 2020
 Date of Expiry

Global MCS MSCB-122 IAF REGISTRATION ATTACHEE

Certificate is Valid for 3 Years (12.11.2019 to 11.11.2022) From the Date of Initial Registration. Upon Successful Completion of Surveillance Audit New Certificate With an Extended Validity will be issued.

Global Management Certification Services Pvt.Ltd.
 #402, Plot No.410, Mutturu Nagar, Mylavolu, Serilingampally, Hyderabad - 500 049, India.

Homologation - CEMIG

CEMIG CLASSIFICAÇÃO: RESERVADO
RESULTADO DE EVENTO DE INSPEÇÃO Seq.: MSOL-40442016A Pág. 1 / 19

CEMIG D CMF - 06.061.1800001-05 Inspr. Ext. 062.202708.0007 Inspr. Man. 100.523001-17 Inspr. 061.2006.1188. Fax: 0511.3058.1194
 Av. Balsemão 1205 Sala Aguardante CEP:01505-121 São Carlos/SP Inspr. Ext. 062.202708.0008 Inspr. Man. 100.523001-18 Inspr. 061.2006.1188. Fax: 0511.3058.1194

CEMIG GAT CMF - 06.061.1700001-08 Inspr. Ext. 062.202708.0008 Inspr. Man. 100.523001-18 Inspr. 061.2006.1188. Fax: 0511.3058.1194
 Av. Balsemão 1205 Sala Aguardante CEP:01505-121 São Carlos/SP Inspr. Ext. 062.202708.0007 Inspr. Man. 100.523001-17 Inspr. 061.2006.1188. Fax: 0511.3058.1194

CEMIG HOLDING CMF - 10.100.0000000-00 Inspr. Ext. 062.202708.0007 Inspr. Man. 100.523001-18 Inspr. 061.2006.1188. Fax: 0511.3058.1194
 Av. Balsemão 1205 Sala Aguardante CEP:01505-121 São Carlos/SP

Atividade: Inspeção Reinspeção Acompanhamento
 Homologação Garantia Visita

Pedido de Compra/CT/Empreendimento: **HOMOLOGAÇÃO**
 Formecedor: **SHIRDI SAI ELECTRICALS LTD - COD 381125**
 Subfornecedor:

Local do Evento: **ANDHRA PRADESH-INDIA**
 Doc. solicitação: **ANDHRA PRADESH-INDIA** Data solicitação: **08/09/2016**
 Data solicitação para início evento: **22/09/2016** Data real início evento: **22/09/2016**
 Aplicação/Etapa de controle Inspeção/Inspeção - Homologação

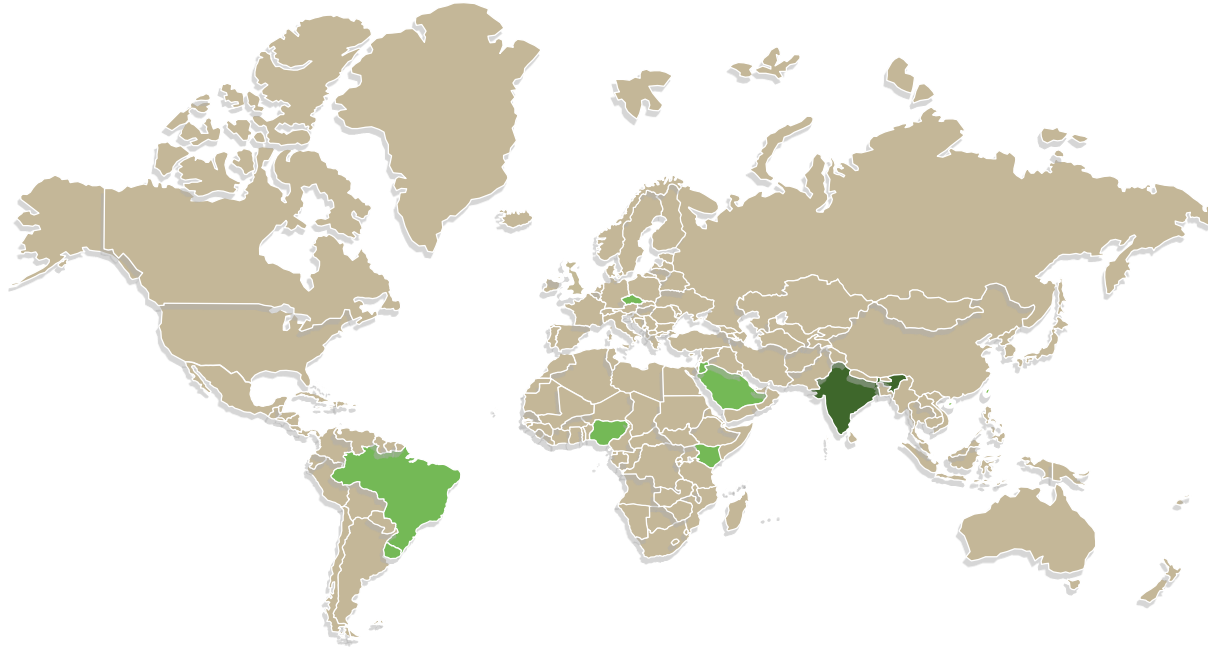
RESULTADO DO EVENTO DE INSPEÇÃO:

Item	Código SAP	Local Controle	MATERIAL (breve descrição)	Qtds Solic.	Qtds Apres.	Aprov.	RESULTADO	Inspeção	Reprov.
001	240779	800000073 613	TRANSFORMADOR, DISTRIBUIÇÃO, 11KV, 15KVA, 7947-240/120V, CORE, 55% MONOFÁSICO, IMPERMEÁVEL 2, 1/2, ISOLAÇÃO ÓLEO, INSTALAÇÃO EM PÓRTE- ET-0118-CBMIG-110P.	1	1	1	<input type="checkbox"/> Melhor <input type="checkbox"/> Ruim		
002	240803	800000073 614	TRANSFORMADOR, DISTRIBUIÇÃO, 11KV, 37,5KVA, 7947-240/120V, CORE, 55% MONOFÁSICO, IMPERMEÁVEL 2, 1/2, ISOLAÇÃO ÓLEO, INSTALAÇÃO EM PÓRTE- ET-0118-CBMIG-110P.	1	1	1	<input type="checkbox"/> Melhor <input type="checkbox"/> Ruim		
003	240837	800000073 617	TRANSFORMADOR, DISTRIBUIÇÃO, 11KV, 45KVA, 11000-230/117V, CORE, 55% TRIFÁSICO, IMPERMEÁVEL 2, 1/2, ISOLAÇÃO ÓLEO, INSTALAÇÃO EM PÓRTE- ET-0118-CBMIG-110P.	1	1	1	<input type="checkbox"/> Melhor <input type="checkbox"/> Ruim		
004	240785	800000073 616	TRANSFORMADOR, DISTRIBUIÇÃO, 11KV, 300KVA, 11000-230/117V, CORE, 55% TRIFÁSICO, IMPERMEÁVEL 4, 1/2, ISOLAÇÃO ÓLEO, INSTALAÇÃO EM PÓRTE- ET-0118-CBMIG-110P.	1	1	1	<input type="checkbox"/> Melhor <input type="checkbox"/> Ruim		
005	240787	800000073 762	TRANSFORMADOR, DISTRIBUIÇÃO, 11KV, 15KVA, 7947-240/120V, CORE, 55% MONOFÁSICO, IMPERMEÁVEL 2, 1/2, ISOLAÇÃO ÓLEO, INSTALAÇÃO EM PÓRTE- ET-0118-CBMIG-110P.	----	----	01			
006	240786	800000073 763	TRANSFORMADOR, DISTRIBUIÇÃO, 11KV, 20KVA, 7947-240/120V, CORE, 55% MONOFÁSICO, IMPERMEÁVEL 2, 1/2, ISOLAÇÃO ÓLEO, 100% TALACHADO EM PÓRTE- ET-0118-CBMIG-110P.	----	----	01			

Formecedor Data Inspeção 17-05-2017 Ger. Qualidade Mat. e Form. Data 17-05-2017

ATENÇÃO: (SOMENTE PARA MATERIAL COM ENTREGA EM ALMOXARIFADO CEMIG)
 1. Este documento deverá obrigatoriamente ser devolvido ao fabricante do material;
 2. Horário de atendimento: 08:00 às 11:00 e 12:30 às 16:00 horas. Não atendemos aos sábados, domingos e feriados.
 3. Para execução de serviços de força e descarga nos alimentadores é obrigatório o uso de: calça comprida, camisa ou macacão, capacete fechado, luvas de segurança, óculos de segurança (para carga e descarga de sucatas) e capacete de segurança com quebra-vidro;
 4. Na portaria da CEMIG, favor informar-se sobre a política de segurança no trabalho e meio ambiente.

SSE PRODUCTS ON GLOBE



EXISTING MARKETS

◆ India (Major Market) ◆ Brazil ◆ Uruguay ◆ Nigeria ◆ Kenya ◆ Saudi Arabia ◆ Jordan ◆ Czech Republic

OUR MAJOR CLIENTS



CORPORATE SOCIAL RESPONSIBILITY

EDUCATION

- Special Study Camps for students
- Distributed Bicycles, Books & Bags to economically backward students
- Sponsoring Akshaya Vidya Centres in slum areas

LIVELIHOOD

- Skill development programmes for unemployed youth

ORGANIC FARMING

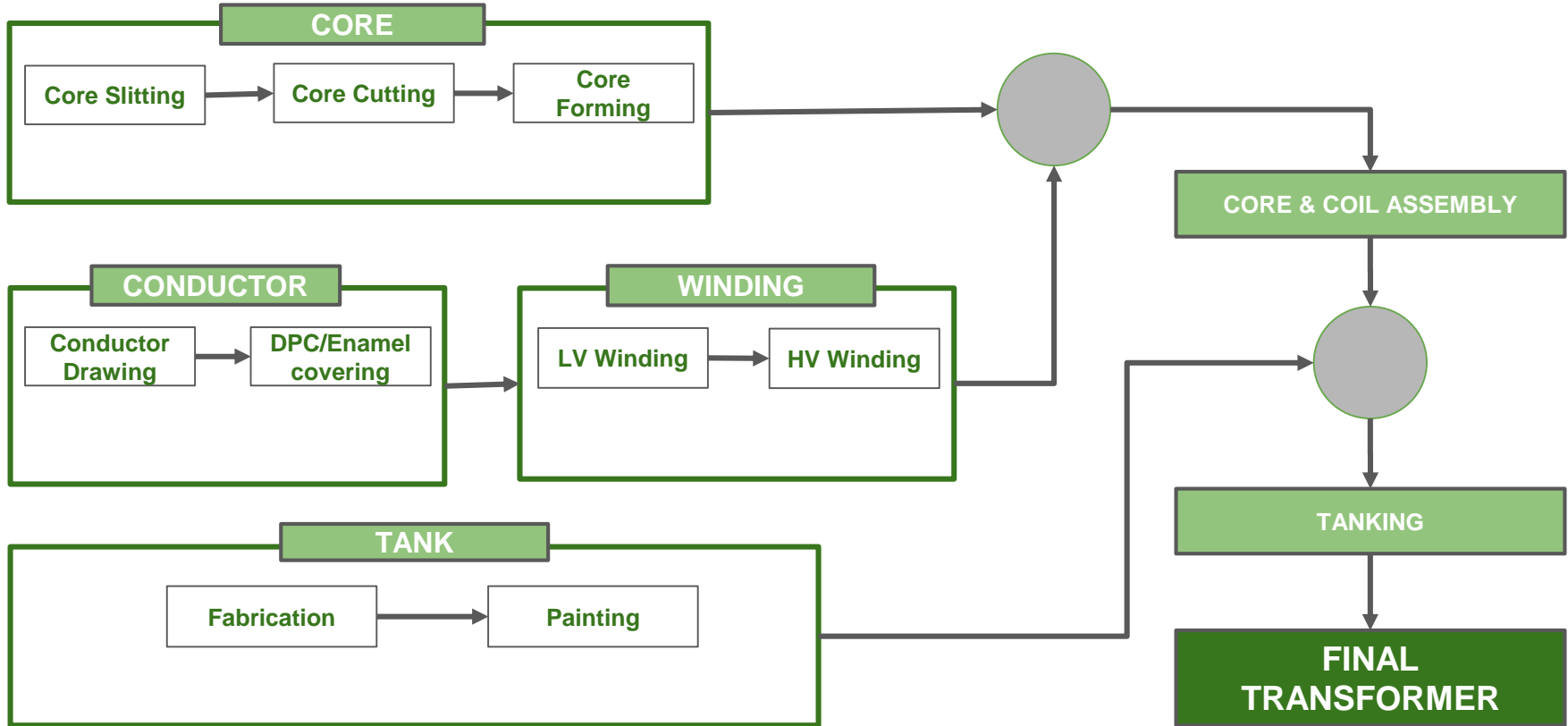
- Provided training in Organic farming to farmers with the support of CBWE
- Formed 30 Farmer clubs



**DISTRIBUTION & POWER
TRANSFORMERS**



OUR MANUFACTURING PROCESS FLOW



PRODUCT PROFILE - DTR

SINGLE PHASE TRANSFORMERS



THREE PHASE DISTRIBUTION



CONVENTIONAL TYPE DISTRIBUTION TRANSFORMERS (CRGO/AMORPHOUS)

Single Phase upto 1670 kVA, 33 kV class
Three Phase upto 3000 kVA, 33 kV class

CSP TYPE DISTRIBUTION TRANSFORMERS (CRGO/AMORPHOUS)

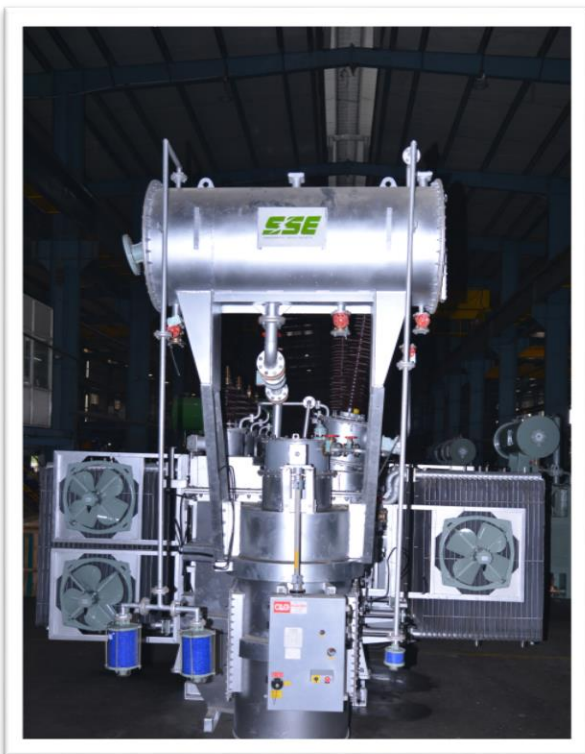
Single Phase upto 167 kVA, 11 kV class
Three Phase upto 315 kVA, 11 kV class

TRANSFORMERS WITH CORRUGATED PANELS upto 2500 kVA, 33 kV class

SPECIAL APPLICATION TRANSFORMERS upto 1500 kVA, 33 kV class

We also offer CE Compliant Transformers

PRODUCT PROFILE - PTR



THREE PHASE
POWER



POWER TRANSFORMERS
upto 50000 kVA, 132 kV class



We also offer **CE** Compliant Transformers

SUPPLY - PTR

Rating	Qty
10 MVA, 33/11 kV	14
12.5 MVA, 33/11 kV	14
12.5 MVA, 66/11 kV	2
16 MVA, 110/33-11 kV	1
1670 kVA, 13.8/19.919 kV - 1Ph	21
1670 kVA, 34.5/7.967 kV - 1Ph	37
5 MVA, 33/11 kV	508
7 MVA, 6.6/2.08-2.08 kV	1
8 MVA, 33/11 kV	27
TOTAL	625



TYPE TESTED

- **188** Designs Type Tested
- **157** Designs Short Circuit Tested

Single Phase - **1670 kVA** in **34.5 kV Class**
Three Phase - **2500 kVA** in **11 kV Class**
Three Phase - **12500 kVA** in **33 kV Class**

264 Types* of **BIS Certified** Transformers

* Classification based on Core/Conductor Material, Sealed/Conservator & Energy Efficiency

Entire range of BIS for 11 KV Class and upto 200 kVA for 33 KV Class

3 Designs Type Tested and SC tested at **KEMA (CESI)**

BACKWARD INTEGRATED FACILITIES - CORE

CRGO
SLITTING



Automatic Slitting & Cutting line

AMORPHOUS
CORE FORMING



CRGO CORE
FORMING



BACKWARD INTEGRATED FACILITIES - CONDUCTOR

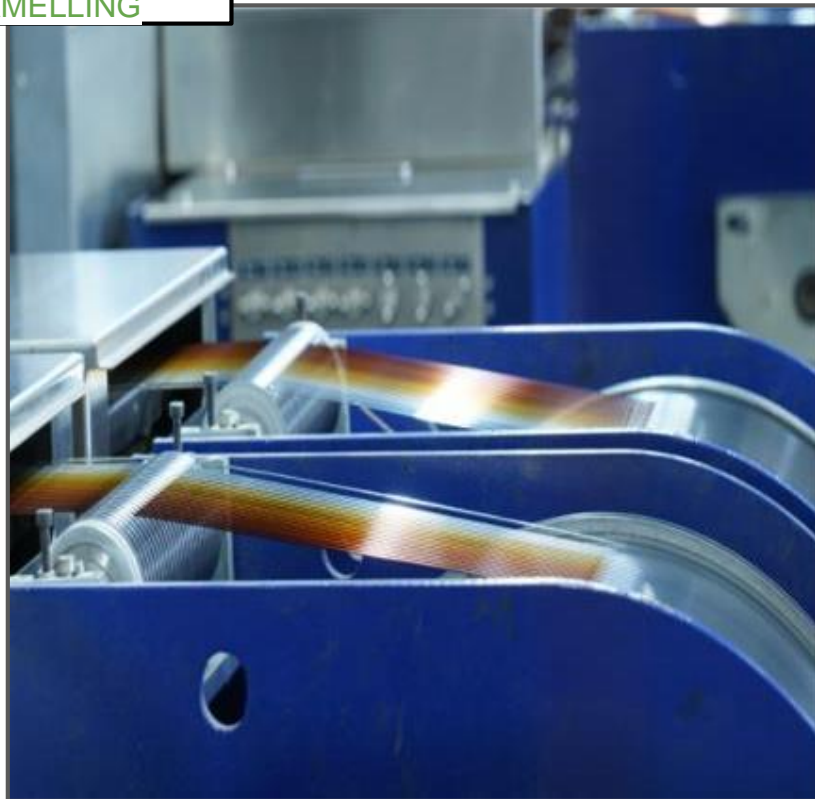
HORIZONTAL WIRE DRAWING &
ENAMELLING



DPC
MACHINE

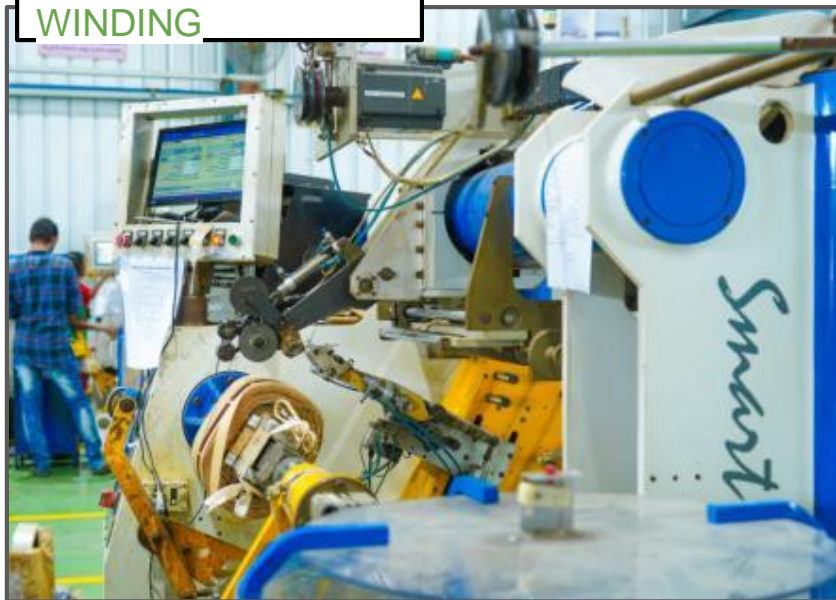


ENAMELLING



BACKWARD INTEGRATED FACILITIES - WINDING

FULLY AUTOMATED
WINDING



FOIL
WINDING

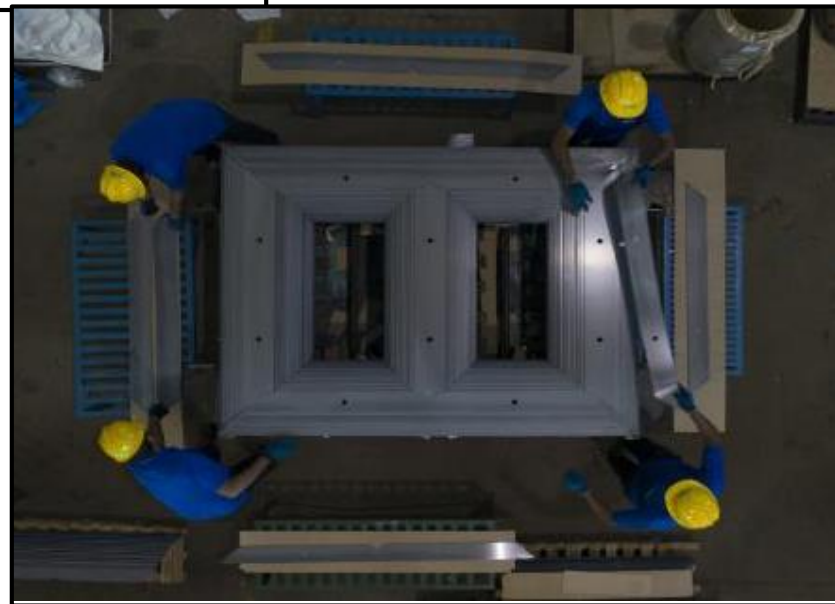


BACKWARD INTEGRATED FACILITIES – PTR WINDING

PTR WINDING



PTR CORE



BACKWARD INTEGRATED FACILITIES – PTR CCA

CCA



OVEN



BACKWARD INTEGRATED FACILITIES - FABRICATION

FULLY AUTOMATED
BENDING



FULLY AUTOMATED
WELDING



CORRUGATION
MACHINE



LASER
CUTTING





EPC PROJECTS



PROJECT PROFILE

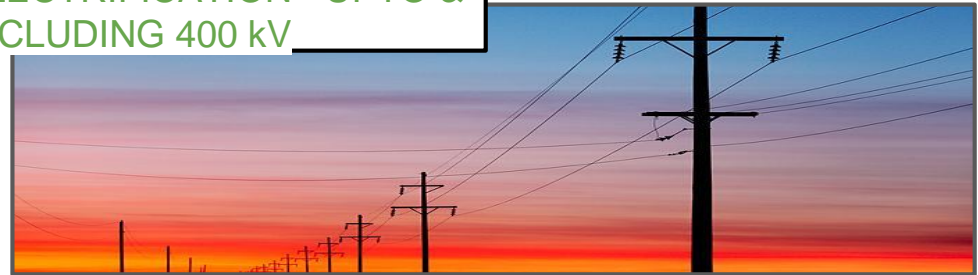
HIGH VOLTAGE DISTRIBUTION SYSTEMS



SUBSTATION ERECTION - UPTO & INCLUDING 400 kV



ELECTRIFICATION - UPTO & INCLUDING 400 kV



PROJECTS PROFILE

Erected more than 50 substations

Erected 110 kV Substation for KPTCL

Erected more than 80,000 KMS of LT & HT Lines

OUR STRENGTHS

Capacity Multiple subcontractors to execute on ground for different types of projects

Vendor base in PAN India to source multiple products for execution

Timeliness Delivering project on time backed by our well trained, efficient and equipped workforce

Quality In compliance with global standards for In-house Quality Assurance Procedures



SERVICES



Supply

Transformer Spares

Services

On site support

Repairs at factory

Emergency support at site

Transformers Installation, Testing & Commissioning

Consultancy

Failure Analysis

Technical assistance in Design, Specification

New Vendor/Product Development

Customer Training

Onsite Training

Training at Factory



Recipient of **NATIONAL ENERGY CONSERVATION AWARD** - for achievement in Energy Conservation, Conferred by Government of INDIA, for Manufacture of BEE Star labelled Distribution Transformers

SSE KEY MILESTONES

