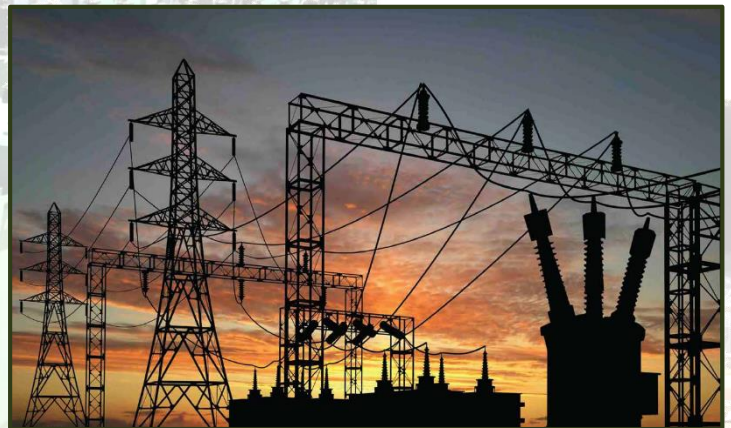




SHIRDI SAI ELECTRICALS LTD

For **Smart Sustainable Energy**

# SUSTAINABILITY REPORT



**Transformation through Innovation**

**TABLE OF CONTENTS**

MESSAGE FROM CMD .....	2
SHIRDI SAI ELECTRICALS LIMITED IN BRIEF .....	3
1. ABOUT US .....	4
2. EXISTING MARKETS .....	5
3. ENVIRONMENTAL MANAGEMENT .....	6
4. OCCUPATIONAL HEALTH & SAFETY .....	8
5. OUR WORKFORCE .....	9
6. CORPORATE SOCIAL RESPONSIBILITY .....	10

## MESSAGE FROM CMD

Our VISION is to build a sustainable organization that cater to the emerging needs of Energy sector.

We are focused on product and process innovation to meet customer's expectation on sustainable basis. We achieve this by

- leveraging our competence, experience and expertise for safer, reliable and cost effective solutions
- Investing in People, Technology and Processes
- Lead by action on social responsibility

The demand for energy is set to continue increasing, supporting the world's economic investment into the future. With wide-ranging experience and expertise, SSE provides highly effective solutions that cater to a conscientious ecosystem.

Our pursuit of excellence while delivering the best quality output has empowered us to become leading players in the electrical industry in India.

Our Strategic and Systematic Enhancement approach in business, and the vision to become a global



***“QUALITY IS NOT AN ACT,  
IT’S A HABIT”***

player, helps us continually improve, expand and consolidate.

We want to be recognized as a world-class leader in everything we do, and we want all our stakeholders to be proud of their association with us. Over the past few years, we have invested increasingly in our factories, thus creating the basis for organic growth.

Our principles and passion for quality make that happen. Through personal excellence and product excellence – which inevitably leads to business excellence – and stakeholder happiness, we strive to exceed client expectations and scale new heights of success.

**SHIRDI SAI ELECTRICALS LIMITED IN BRIEF**

SSEL have

**25+**  
**YEARS**

of Experience  
In the Industry

Up to now

**600,000+**  
**TRANSFORMERS**

produced  
in our Plant

Around

**315+**  
**MILLION \$**

Annual  
Turnover

In more than

**20**  
**COUNTRIES**

happy  
customers

More than

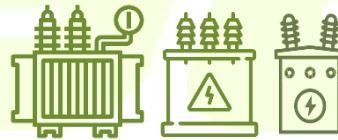
**80,000**  
**KMS OF HT & LT LINES**

erected  
till now

Production Capacity

**350+**  
**TRANSFORMERS**

per day  
of distribution range



**BUSINESS VERTICALS**

**TRANSFORMERS MANUFACTURING**

- Distribution Transformers up to 2.5 MVA, 33 kV
- Power Transformers up to 200 MVA, 220 kV
- EHV Transformers up to 500 MVA, 400 kV
- Semi finish parts of transformers

**SERVICES**

- Asset Management
- Repairs & Refurbishment (On-site & at factory)
- Consultancy
- Training

**EPC/TURNKEY PROJECTS**

- New Line Erection / Rural Electrification
- Substation Erection up to 400 kV
- System Strengthening / High Voltage Distribution System

**PRODUCTS PROFILE**

- Single Phase & 3 Phase Distribution Transformers
- Transformers with CRGO Core/Amorphous Core
- Conventional/CSP type Distribution Transformers
- Transformers with corrugated tanks/radiators
- Special Application Transformers (Earthing/Auxiliary Transformers)
- Transformers for Renewable Energy Applications (Wind/Solar)
- Medium Power Transformers
- Large Power Transformers

180+ Designs Type Tested and Short Circuit Tested

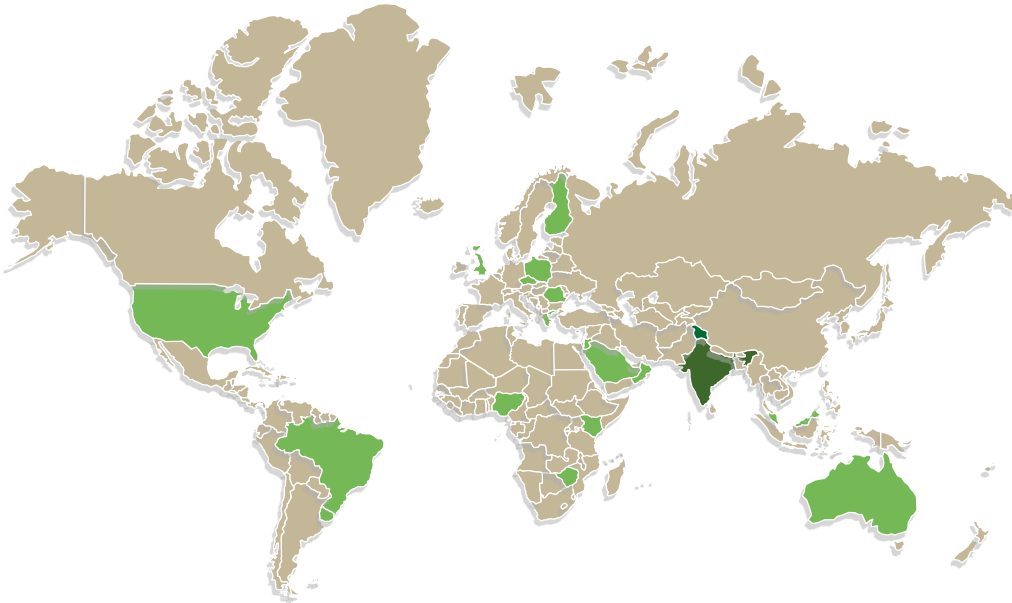
## 1. ABOUT US

**Shirdi Sai Electricals Limited is a Public Limited Company with its Corporate Office in Hyderabad and Factories in Kadapa, Andhra Pradesh & Naini, Uttar Pradesh.**

- Established in **1994** at Kadapa, Andhra Pradesh, India.
- An **ISO 9001:2015, ISO 14001:2015 & ISO 45001:2018** certified company.
- Annual Revenue of **315 Million USD**.
- Completely **Backward integrated** facility with automation, covered area of **170,000 Sq. Meters**.
- Manufacturing capacity of **350** Distribution Transformers / day (REC Range).
- Installed base of **600,000+** Transformers.
- **NABL Accredited** Test Lab.
- Largest manufacturing facility in INDIA for **Energy Efficient Amorphous Transformers**.
- Largest EPC Player in **HVDS (Power Distribution System Strengthening)** Projects.
- Erected **80,000 KMs** of LT & HT Lines up to 132 kV.
- Installed & Commissioned over **100 Nos. of Substations**.
- Electrified over **1000 villages** under various schemes of Govt. of India
- Energized over **700,000** agricultural Pump-sets in far flung rural areas on Pan India Scale.
- Two-time Recipient of **NATIONAL ENERGY CONSERVATION AWARD** - for achievement in Energy Conservation, Conferred by Government of INDIA, for Manufacture of BEE Star labelled Distribution Transformers
- **Acquired Indo Tech Transformers**, Chennai from PROLECGE
- **Acquired** power transformer manufacturing **unit of GE Naini**, Uttar Pradesh.
- **Star Export House** Status – from Govt. of India.

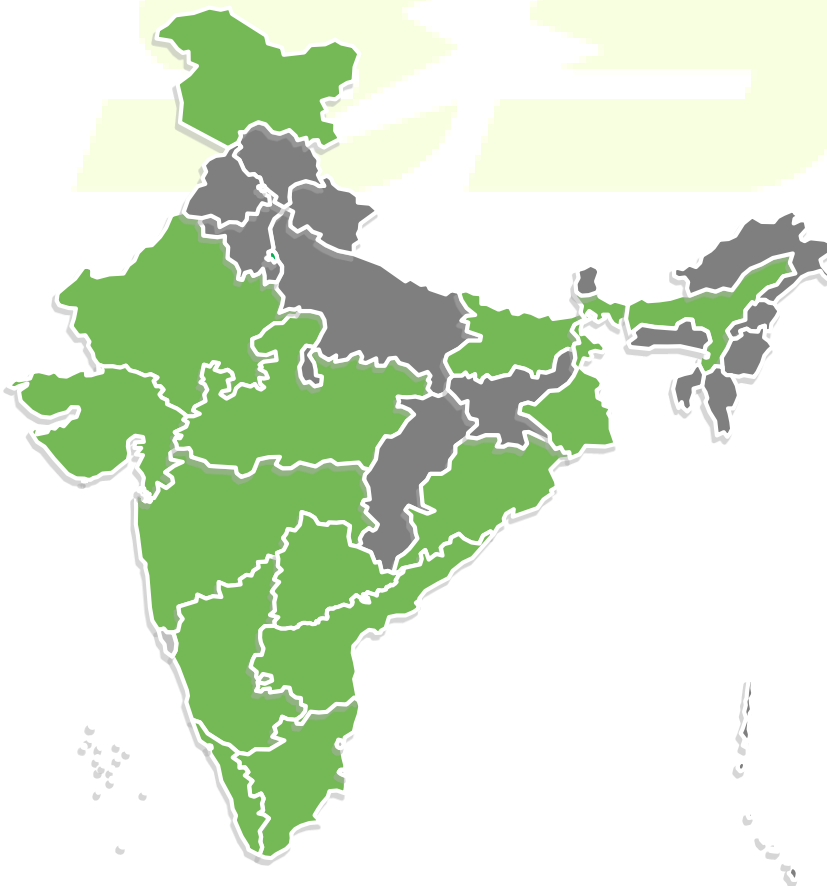
## 2. EXISTING MARKETS

### SSEL GLOBAL REACH



- India (Major Market)
- Brazil
- Uruguay
- Nigeria
- Kenya
- Saudi Arabia
- Kuwait
- Jordan
- Czech Republic
- Zimbabwe
- Oman
- Finland
- UK
- Poland
- Romania
- Australia
- Greece
- USA

### SSEL INDIAN MARKET



- Andhra Pradesh
- Telangana
- Bihar
- Madhya Pradesh
- Karnataka
- Tamil Nadu
- Rajasthan
- Maharashtra
- Orissa
- Kerala
- Gujarat
- Jammu & Kashmir
- Delhi
- West Bengal
- Assam

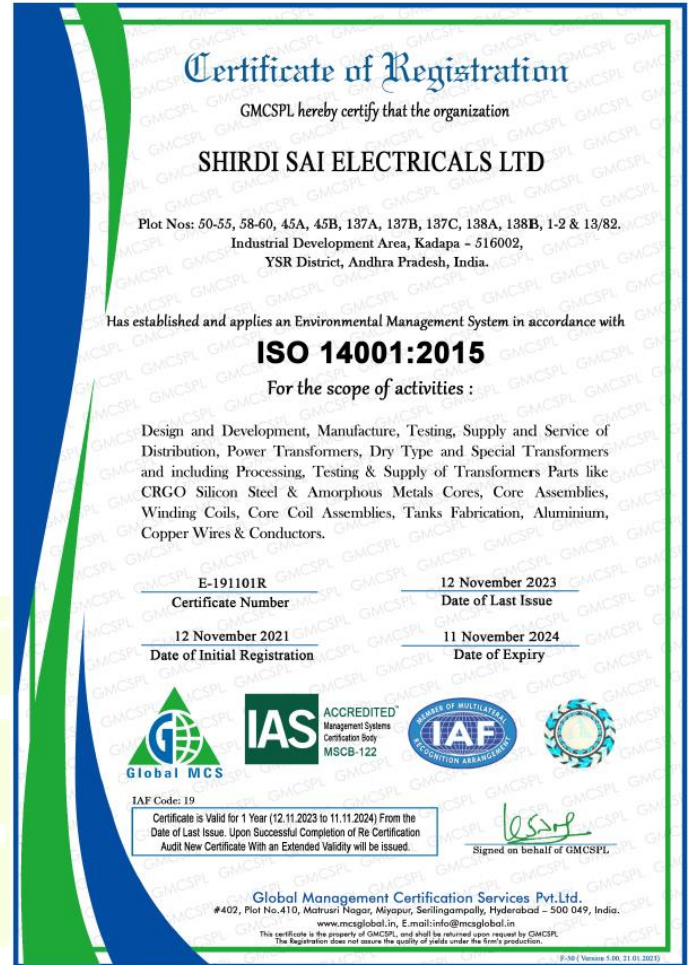
### 3. ENVIRONMENTAL MANAGEMENT

**Shirdi Sai Electricals Limited is an ISO 14001:2015 Certified Company**

Shirdi Sai Electricals Limited (SSEL) is conscious of the environmental impact that may arise from its activities, products and services and operate an Environmental Management System (EMS) meeting ISO 14001:2015 requirements for continual improvement.

We demonstrate our commitment to this policy through:

- Compliance with Legal & Other Requirements
- Prevention of Pollution
- Conservation of Natural Resources
- Continual Improvement
- Environmental Awareness



High product quality, complying with environmental requirements, is our top priority.

SSEL has stringent Waste Segregation, Storage and Disposal policies and procedures defined, for effective management of waste generated during receipt, manufacturing, storage and delivery at SSE Manufacturing facilities including waste generated at facilities from the services provided by contractors.

As part of our initiative towards Carbon Foot Print reduction, our factories are equipped with Solar PV panels on the roof.

Our Environmental Contribution so far:

**5280+**  
**Tonnes of CO<sub>2</sub>**  
reduced

**4565+**  
**Barrels of Oil**  
saved

Energy Needs of

**840**  
**Households**  
(of 4 people)

More than

**900**  
**Trees**  
saved



## 4. OCCUPATIONAL HEALTH & SAFETY

In the last 5 years

**0**

**FATAL INCIDENTS**  
2019-2023

We have

**1**

**HEALTH & SAFETY GUIDELINE**  
valid for all our establishments

Conducted

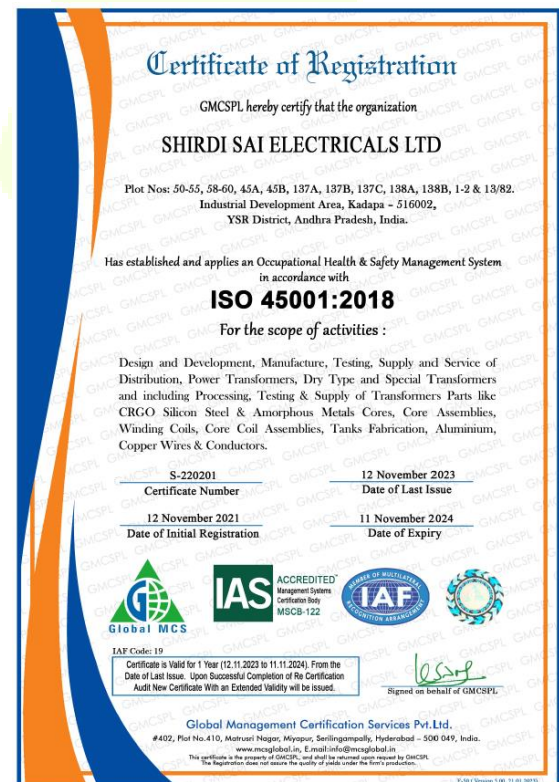
**1800+**

**HOURS**  
of Safety Training Sessions in  
2023

Shirdi Sai Electricals Limited (SSEL) shall be conscious of the occupational health and safety impact that may arise from its activities, products and services and operate an Occupational Health and Safety Management System (OHSMS) meeting ISO 45001: 2018 requirements for continual improvement.

We will demonstrate our commitment to this policy through:

- We are committed to provide a congenial and healthy working environment to our employees with prime focus on issues related to occupational health and safety in our operations.
- We commit to continually improve and maintain high standards of health and safety for our employees, through our commitment to prevent ill health and injuries.
- We commit to comply with all applicable and relevant legal and other requirements.
- We identify periodically all possible hazards, assess them and prioritize them, to set up appropriate objectives / development projects with a view to mitigate such hazard situations.
- We ensure that our employees, contractors and visitors have the awareness, skills and knowledge to comply with our policy



## 5. OUR WORKFORCE

**2000+** **1050** **2.29%**

**WORKFORCE**

Across our organization

**NEW EMPLOYEES**

in year 2023

**ATTRITION RATE**

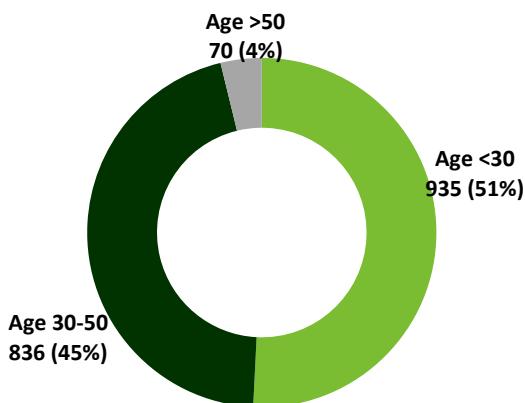
Across our organization

Shirdi Sai Electricals Limited (SSEL) is driven by motivated workforce who identify with their employer. Some of our staff have been working with us for decades.

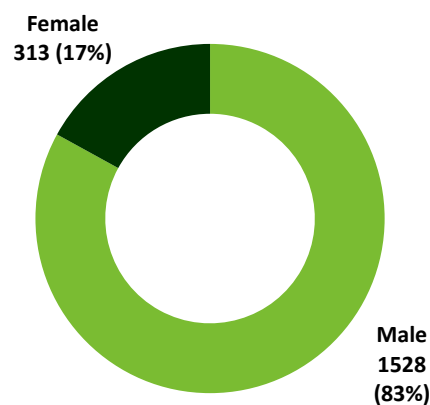
Due to our growth strategy, we were able to recruit a total of 433 employees to our organization. The rate of fluctuation within our entire organization is 2.27%



### TOTAL EMPLOYEES BY AGE



### TOTAL EMPLOYEES BY GENDER



## 6. CORPORATE SOCIAL RESPONSIBILITY

Shirdi Sai Electricals Limited (SSEL) strives to preserve its CSR legacy towards ‘Sustained Inclusiveness’ and being a ‘Neighbor of Choice’.

Details of some of SSE’s CSR initiatives undertaken:

### EDUCATION

- **Special Study Camps for students**
- **Distributed Bicycles, Books & Bags to economically backward students.**
- **Sponsoring Akshaya Vidya Centers in slum areas.**



### LIVELIHOOD

- **Skill development programs for unemployed youth.**



### ORGANIC FARMING

- **Organized training sessions in Organic farming, to farmers, with the support of CBWE.**
- **Formed 30 Farmer clubs.**

